

**PAJUNK®**

*EpiLong –  
Systems for Continuous  
Epidural Anaesthesia*



**Epidural**

## Gentle Obstetrics

# Continuous Epidural Anaesthesia

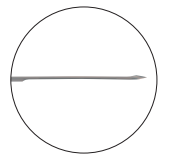
Epidural anaesthesia has proven itself to be very effective in obstetrics. PAJUNK® supports this modern form of puncture-technology close to the spinal cord with its various sets for continuous epidural

anaesthesia. The main emphasis of development is focused on the optimization of the cannula and of the catheter with regard to gentle and safe application.



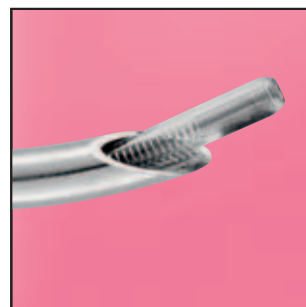
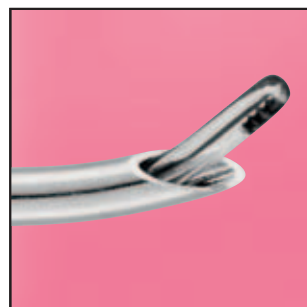
### EpiLong I

### EpiLong Soft



#### Tuohy Cannula with Metal Stylet

As a standard, the Tuohy cannula of the EpiLong I Set as well as of the EpiLong Soft Set is generally equipped with a metal stylet. This renders more stability, particularly also for special lengths.



#### EpiLong Catheter

The standard epidural catheter is alternatively available with closed tip and lateral eyes, or with a central opening.

#### EpiLong Soft Catheter

The EpiLong Soft catheter with an integrated metal spiral has a central opening, is very flexible and it resists buckling/creasing at the same time.

There are altogether three different sets to choose from:

- EpiLong I
- EpiLong Soft
- EpiLong Tuohy

All three sets include a Tuohy cannula, which is either equipped with a metal stylet or with the more economical plastic stylet, and they are available with different catheter versions.



## EpiLong Tuohy



### Tuohy cannula with plastic stylet

The Tuohy cannula of this set is fitted with a plastic stylet.



### EpiLong Catheter

The EpiLong catheter is alternatively available with closed tip and 3 lateral eyes, or with a central opening.

*Details make the difference*

## **The Components in the Epidural Set**

### **Tuohy cannula**



The design and the production of the Tuohy cannula ensure, that the special requirements demanded regarding the puncture into the epidural space are taken into account.

**The cannula must be designed in such manner, so that it will pass through the tissue and ligaments optimally.**

The PAJUNK® epidural cannulae are equipped with a special stylet made of stainless steel, which closes off flush to the cannula. Because the cannula and the stylet are produced and sharpened together. It is therefore literally impossible, that tissue fragments are distributed and scattered into the epidural space.



Stainless steel stylet ends flush with the cannula

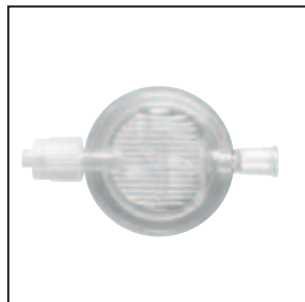


On-target catheter guidance with Tuohy cannula

**In continuous epidural anaesthesia, the design of the cannula is decisive for the correct placement of the catheter during introduction.**

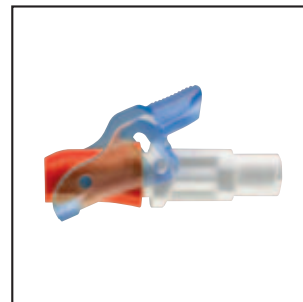
Thanks to the special grind of the Tuohy cannula, the catheter of the PAJUNK® Epidural Set is positioned in the desired direction. The risk of a rupturing of the catheter is evidently reduced thanks to the special tip geometry.

### **Filter and adapter**



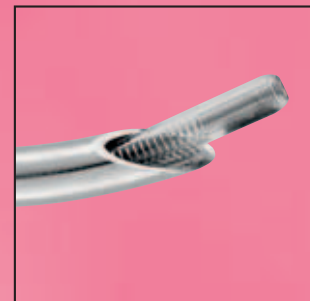
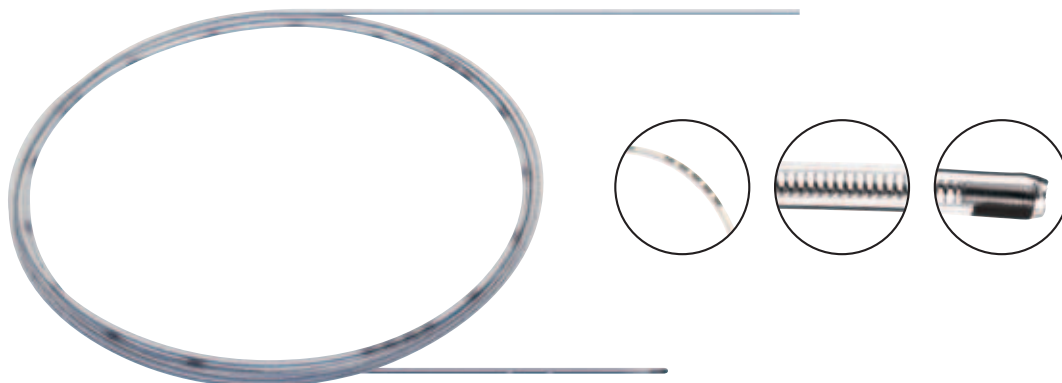
#### **0.2 µm flat filter**

The 0.2 µm flat filter prevents the passage of particles.



The special securing device of the new PAJUNK® clamping adapter avoids overdrawing and ensures 100-per-cent trouble-free flow of the anesthetic.

## EpiLong Soft Catheter



All requirements demanded in epidural anesthesia have been fulfilled and united in the EpiLong Soft Catheter.

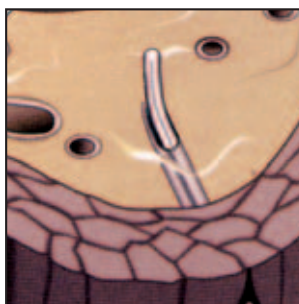
### Unhindered flow

Its integrated metal spiral provides this catheter with a maximum degree of **movability** and simultaneous **firmness against buckling/creasing**. The particularly large inner lumen permits the undisturbed flow of the anesthetic, also and particularly over a longer period of time.



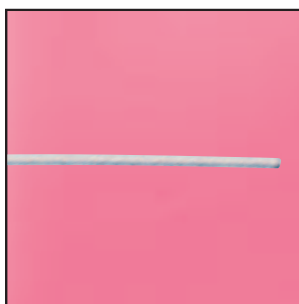
### Atraumatic use

The soft catheter permits optimal placement in the epidural space. Its soft tip prevents the unintentional injury of the dura and of vessels, and it permits the on-target administration of the anaesthetic.



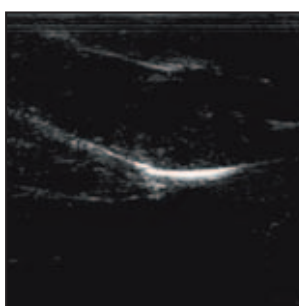
### Memory-effect and tearing resistance

The annoying memory-effect, caused by rolling the catheter up in the packing, is excluded thanks to the integrated metal spiral. The robust nylon material provides for high tensile strength, as well as excellent tissue compatibility.



### Exact localization

Equipped with an ascending depth graduation up to a length of 30 cm in 5 cm intervals, as well as with X-ray / radiographic contrast strips, which guarantee for exact localization of the EpiLong Soft Catheter at any time. The metal spiral furthermore ensures for 100-per-cent ultrasonic visibility – an important prerequisite for optimal catheter placement.



## *An everyday-problem leads to a world novelty*

# **FixoLong ensures the freedom of movement**

Till now, the way of fastening catheters and filters to the patient has been left up to the anaesthesiologist. Problems arising especially during continuous application are, to safeguard that the catheter isn't inadvertently pulled out if the patient moves, or that the supply of the anaesthetic is obstructed by an unfavorable position.

But now this will change. Because PAJUNK® has recognized the need for freedom of movement, while at the same time guaranteeing safe and secure fixation, and therefore PAJUNK® is offering the perfect solution for catheters of the sizes 19 and 20 G.

### **Step by step progress towards more freedom of movement**



1. The PAJUNK® adhesive bandage with the fixated catheter cross is fastened in the vicinity of the catheter exit.

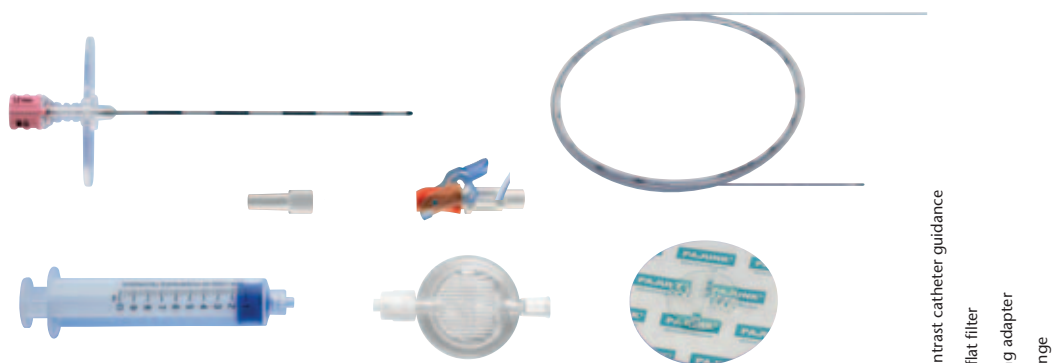


2. The catheter is snapped onto the fastening clips on the left and on the right side, and is thereby locked in position. Now the filter adapter is plugged onto the catheter cross in a fixed position.



3. Finally, the flat filter is locked in position on the filter adapter. This guarantees maximum freedom of movement during all continuous applications.

## EpiLong Sets



### EpiLong I with metal stylet

Product	Size	Catheter	Item no.	PU	X-ray contrast catheter guidance	0.2 µm flat filter	Clamping adapter	LOR syringe
		with closed tip						
Tuohy cannula	18 G x 90 mm	20 G x 90 cm	0431155-51	10	•	•	•	•
Tuohy cannula	17 G x 90 mm	19 G x 90 cm	0431155-48	10	•	•	•	•
Tuohy cannula	17 G x 80 mm	19 G x 90 cm	0431156-48	10	•	•	•	•
<b>EpiLong Set I pediatrics</b>		with closed tip						
Tuohy cannula	19 G x 45 mm	23 G x 50 cm	0131153-50	10	•	•	•	•

### EpiLong Tuohy with plastic stylet

Product	Size	Catheter	Item no.	PU	X-ray contrast catheter guidance	0.2 µm flat filter	Clamping adapter	LOR syringe
		with closed tip						
Tuohy cannula	18 G x 90 mm	20 G x 90 cm	0331152-51	10	•	•	•	•
Tuohy cannula	18 G x 80 mm	20 G x 90 cm	0331153-51	10	•	•	•	•
Tuohy cannula	18 G x 90 mm	20 G x 90 cm	0321152-51	10	•	•	•	•
Tuohy cannula	17 G x 80 mm	19 G x 90 cm	0331153-48	10	•	•	•	•
Tuohy cannula	16 G x 90 mm	19 G x 90 cm	0331152-49	10	•	•	•	•
Tuohy cannula	16 G x 80 mm	19 G x 90 cm	0321152-49	10	•	•	•	•

### EpiLong Soft, catheter with integrated spiral

Product	Size	Catheter	Item no.	PU	X-ray contrast catheter guidance	0.2 µm flat filter	Clamping adapter	LOR syringe
		open tip						
Tuohy cannula	17 G x 90 mm	19 G x 90 cm	0431157-48	10	•	•	•	•
Tuohy cannula	18 G x 90 mm	20 G x 90 cm	0431157-51	10	•	•	•	•

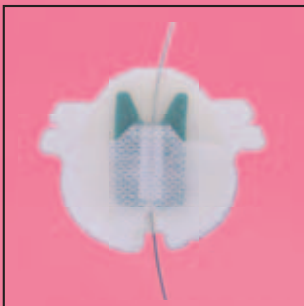
## EpiLong Soft Set 17 G (Individual Set)



Item no. 0431157-848

- 1 Tuohy cannula 17 G x 90 mm with metal stylet and wing
- 1 Spring guided Epidural catheter 19 G x 90 cm
- 1 Clamping adapter (red)
- 1 Syringe 10 ml LOR Luer Lock
- 1 Filter
- 1 FixoLong
- 1 Injection cannula 16 G x 38 mm
- 1 Injection cannula 18 G x 38 mm
- 1 Injection cannula 22 G x 38 mm
- 1 Syringe 10 ml Luer
- 1 Syringe 20 ml Luer
- 1 Syringe 3 ml Luer Lock
- 3 Sponge sticks
- 1 Filter straw 100 mm, packed in outer wrap 90 x 90 cm
- 1 Fenestrate drape
- 5 Compresses





## Set components

Product	Catheter	Item no.	PU			
Catheter with closed tip and 3 lateral eyes	20 G x 90 cm	021151-37C	10	•		•
	19 G x 90 cm	021151-37A	10	•		•
Catheter with central opening	20 G x 90 cm	031151-37C	10	•		•
	19 G x 90 cm	031151-37A	10	•		•
Catheter with Teflon-coated steel stylet and closed tip, 3 lateral eyes	20 G x 90 cm	001151-37C	10	•		•
	19 G x 90 cm	001151-37A	10	•		•
Clamping adapter (red)		001151-37U	10			
LOR syringe		0001151-45	10			
Flat filter		001151-37X	10			
FixoLong						
Adhesive bandage with catheter cross, filter adapter		001151-40	10			•
Adhesive bandage with catheter cross, filter adapter, filter		001151-41	10		•	•

## Tuohy cannula

Product	Size	Item no.	PU
<b>Tuohy cannula, pediatrics</b>			
0.5 cm graduation, metal stylet	18 G x 50 mm	1150-4K050	25
<b>Tuohy cannula</b>			
0.5 cm graduation, metal stylet, with wings	19 G x 80 mm	1150-4I080	25
	19 G x 90 mm	1150-4I090	25
	18 G x 80 mm	1150-4K080	25
	18 G x 90 mm	1150-4K090	25
	18 G x 120 mm	1150-4K120	10
	17 G x 80 mm	1150-4M080	25
	17 G x 90 mm	1150-4M090	25
	17 G x 120 mm	1150-4M120	10
	17 G x 150 mm	1150-4M150	10
	16 G x 80 mm	1150-4O080	25
	16 G x 90 mm	1150-4O090	25
	<b>Tuohy cannula</b>		
1 cm graduation, plastic stylet, with wings	19 G x 90 mm	1150-6I091	25
	18 G x 80 mm	1150-6K081	25
	18 G x 90 mm	1150-6K091	25
	17 G x 90 mm	1150-6M091	25
	16 G x 90 mm	1150-6O091	25

Product	Item no.	PU
FixoCath	001151-37Z	25

**PAJUNK GmbH**  
 Medizintechnologie  
 Karl-Hall-Strasse 1  
 D-78187 Geisingen/Germany  
 Phone +49 (0) 77 04/92 91-0  
 Fax +49 (0) 77 04/92 91-6 00  
[www.pajunk.com](http://www.pajunk.com)